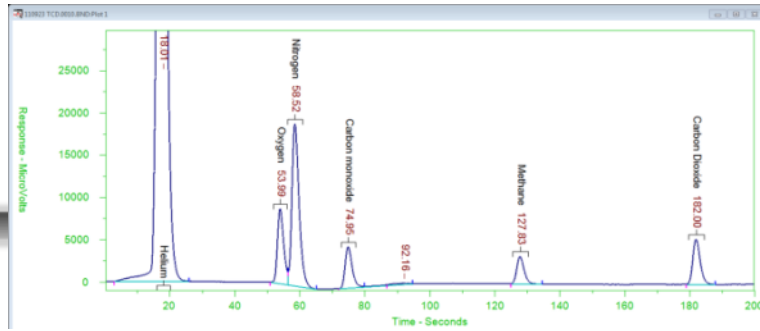
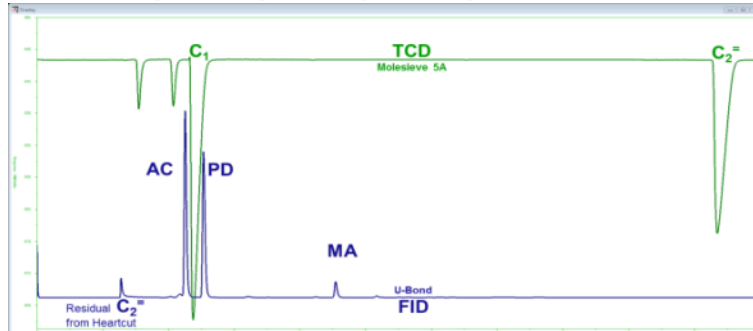


# Application Range Examples



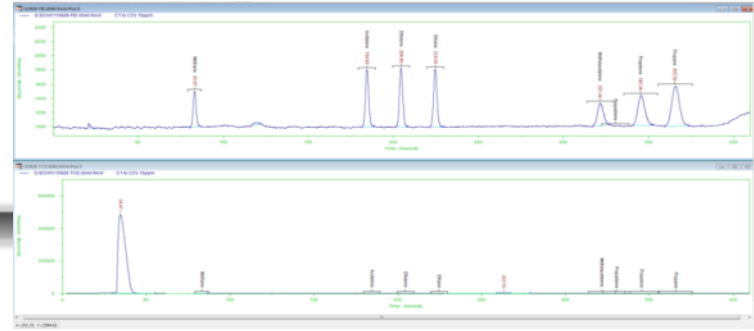
● He, O<sub>2</sub>, N<sub>2</sub>, CO, C<sub>1</sub> CO<sub>2</sub>



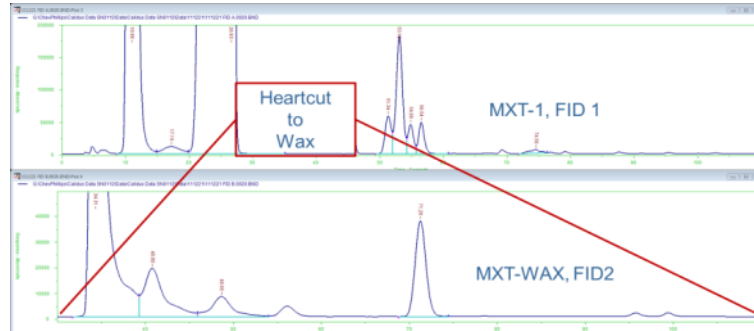
● Air, CO, C<sub>1</sub>, C<sub>2</sub>=, AC, PD, MA



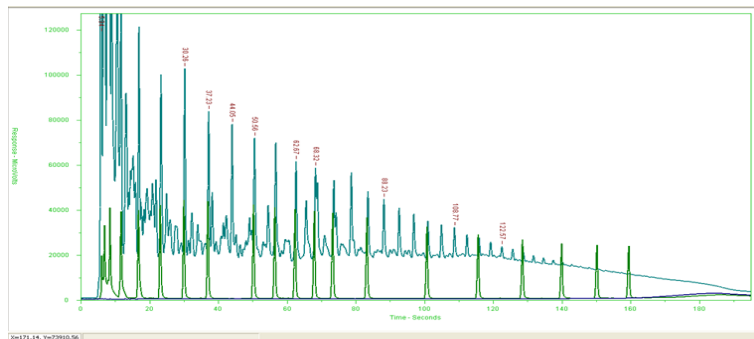
● ASTM D-2887 & UltraFast D-2887



● C<sub>1</sub>, AC, C<sub>2</sub>=, C<sub>2</sub>, MA, C<sub>3</sub>=, C<sub>3</sub>



● C<sub>6</sub> to C<sub>9</sub> Heartcut



● Crude Characterizations

